

## TECHNICAL DATA SHEET

### ***APPLICATION***

This system is suitable for easy installation of photovoltaic substructures on flat roof and is built for adjustable angle.



### ***FAST MOUNTING / EASY STORAGE***

This system is extremely practical and gives you the opportunity to save time during installation, since the majority of the components are offered pre-assembled.

### ***PRODUCT COMPOSITION***

The profiles and accessories used are made out of aluminum produced by extrusion and thermally treated. As raw material is used aluminum alloy EN AW 6063 with a temper T6. All the materials are aluminum and stainless steel.

### ***MODULE COMPABILITY***

This system is suitable for all framed solar module types with height 30-40 mm enabled by adaption of the module clamps.

### ***HIGH QUALITY SERVICE***

This system is strong enough to withstand the weight of the solar panels and the loads caused by atmospheric conditions. Due to their composition and surface treatments that is natural matte 6 to 8  $\mu\text{m}$  10 to 12  $\mu\text{m}$ , the components of this system are resistant to corrosion and can also be recycled.

**PRODUCT BASIC INFORMATION:**

<b>Alloy:</b>	6063
<b>Temper:</b>	T6
<b>Surface Finish:</b>	Anodised Natural Mat 6-8 or 10-12 Micron
<b>Standards &amp; regulation</b>	Alloy of the aluminium components is according to EN 573-3  Teper disegnation refered to EN 515 Mechanical properties of the used profiles are according to 755-2 Structural calculation are according to Eurocode 9 EN 1999 Structural parameters are according to EN 1090-3
<b>Installation :</b>	All joints bolted

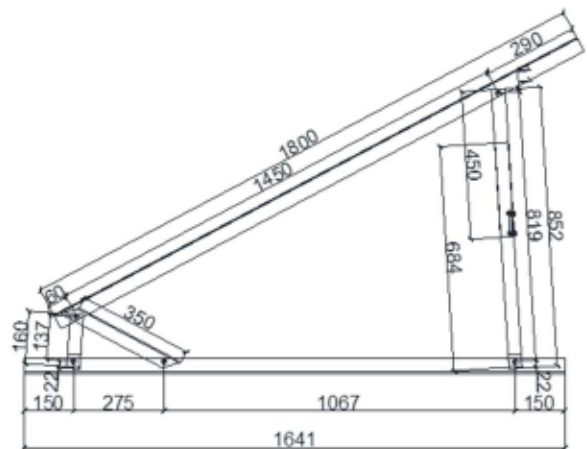
**CHEMICAL COMPOSITION :**  
Chemical analysis are in compliance with the parameters specified in EN 573-3

Chemical Element		% Present
Manganese	(Mn)	0.0 - 0.10
Iron	(Fe)	0.0 - 0.35
Magnesium	(Mg)	0.45 - 0.90
Silicon	(Si)	0.20 - 0.60
Zinc	(Zn)	0.0 - 0.10
Titanium	(Ti)	0.0 - 0.10
Chromium	(Cr)	0.0 - 0.10
Copper	(Cu)	0.0 - 0.10
Other	(Each)	0.0 - 0.05
Others	(Total)	0.0 - 0.15
Aluminium	(Al)	Balance

**MECHANICAL SPECIFICATIONS**

<b>Dimensions</b>	1800 mm x 1641 mm x 1049 mm 70.87 in x 64.61 in x 41.3 in
<b>Weight<sup>1</sup></b>	4.75 Kg (10.47 lbs )
<b>Mounting options</b>	Flat roof

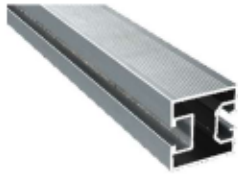
<sup>1</sup> Weight differ slightly



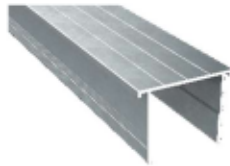
**COMPLIANCE INFORMATION**

<b>Certifications</b>	Qualanod EN 1090-1:2009+A1:2011 EN 15088 ISO 9001 ISO 14001
<b>Environmental</b>	ISO 45001

## COMPONENTS



**Internal Ω profile , angle recording for photovoltaic substructures with dimensions 39.9x39.7 mm**



**External U profile for the base and the upper part of the triangle with dimensions 62.1x47.11 mm**



**Internal U profile with dimensions 42.2x45.1 mm**



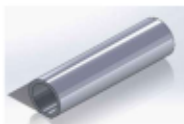
**U accessory with 40 mm cut**



**Accessory for connecting the angle registration profile with the internal U profile**



**Washer for fixing the angle**



**Spacer fi 12 with 40 mm cut**



**Hexagon stainless steel self-locking nut M8 DIN 985**



**M8x15 stainless-steel bolt DIN933 A2-70**



**M8x70 stainless-steel bolt DIN933 A2-70**